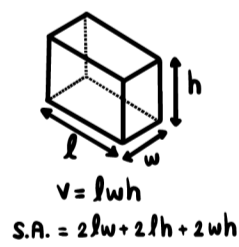
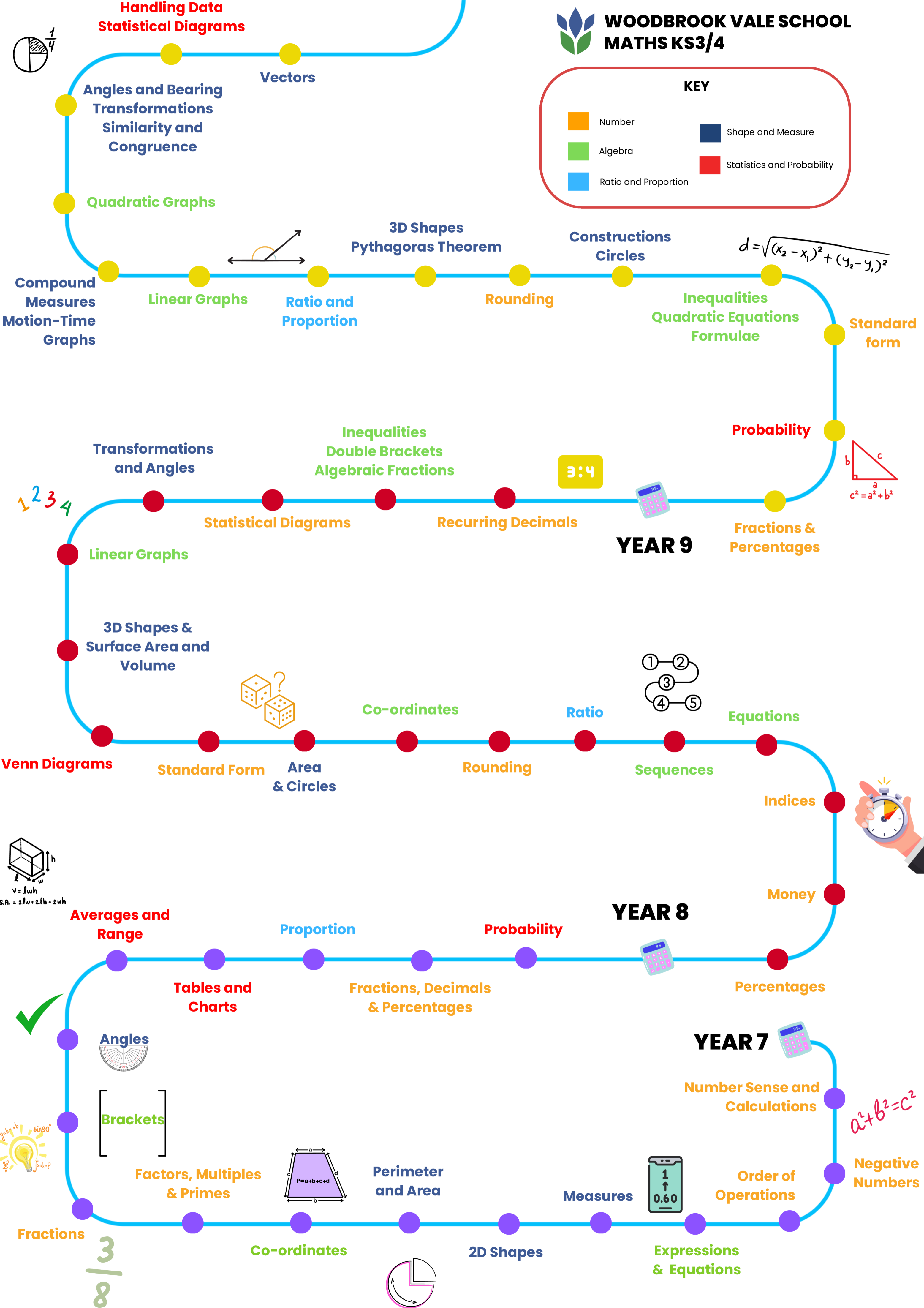
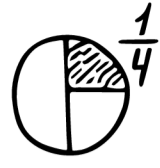




KEY

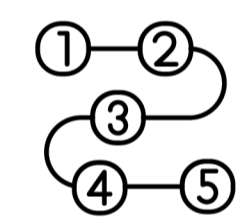
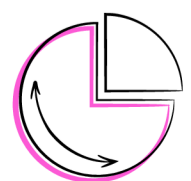
- Number
- Algebra
- Ratio and Proportion
- Shape and Measure
- Statistics and Probability

Handling Data
Statistical Diagrams



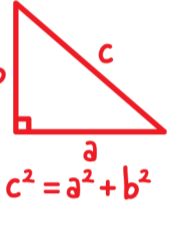
$a^2 + b^2 = c^2$

$\frac{3}{8}$



3:4

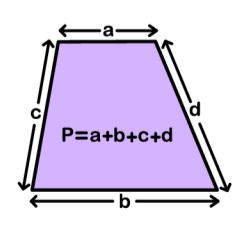
1 2 3 4



$d = \sqrt{(x_2 - x_1)^2 + (y_2 - y_1)^2}$



Brackets



Factors, Multiples & Primes

Perimeter and Area

YEAR 7

YEAR 8

YEAR 9